



MECY 10 EVAPORATIVE COOLER



USER MANUAL

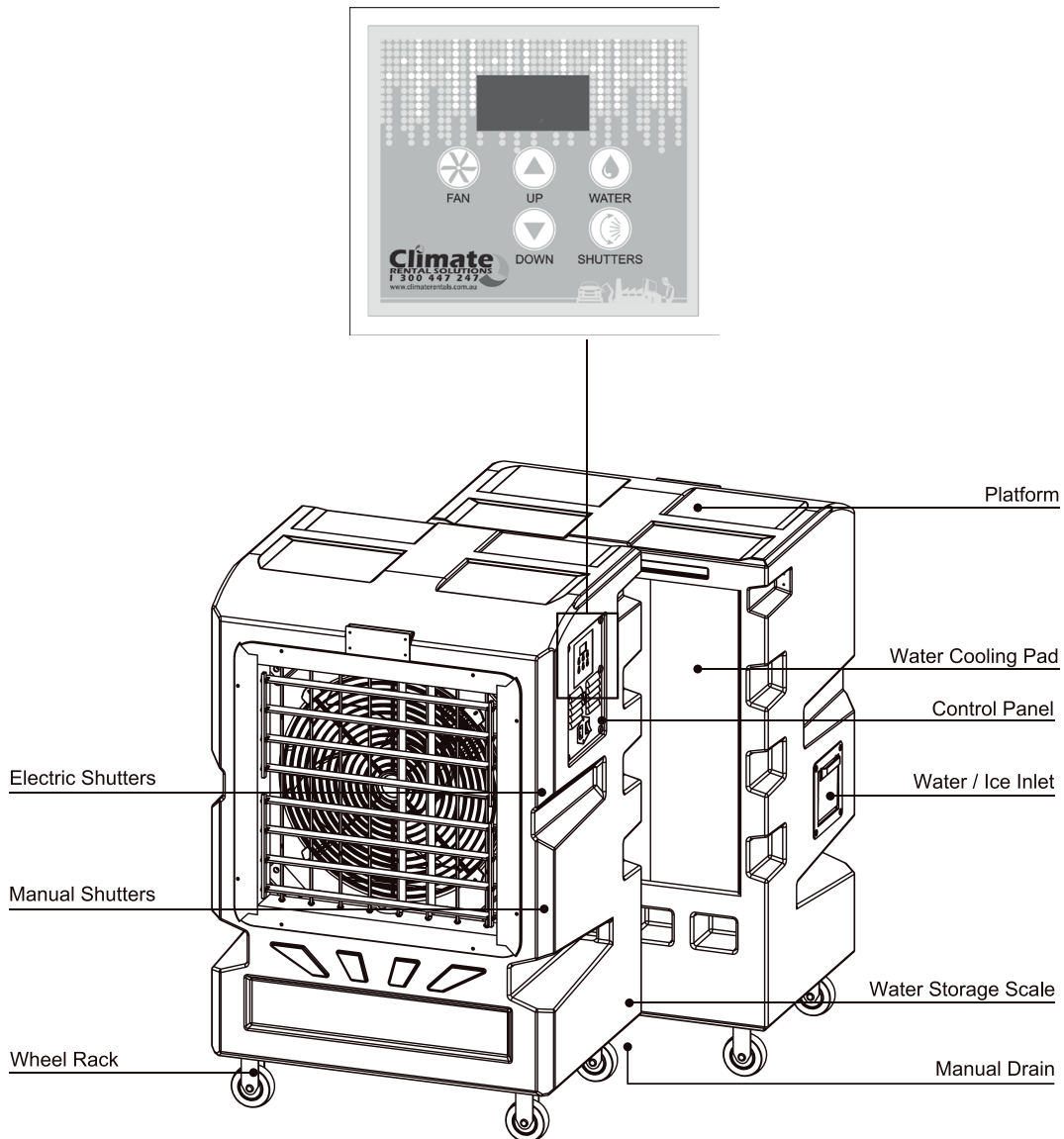
SAVE THESE INSTRUCTIONS FOR FUTURE REFERENCE

PERFORMANCE AND SPECIFICATION

SPECIFICATION

Model	MECY 10	Speed (Max.)	1600 RPM	Wind Distance (Max.)	10m up
External Frame	PE	Sound Volume (Max.)	55dB	Size	L67*W48*H100cm
Blades	16" 3 Nylon 6 + Fiber Blades	Voltage (Regular)	1 % 230V, 50Hz	Water Storage	48L
Motor	1/3HP F Grade	Current (Max.)	2.4A	Weight	30kg
Pole	4P	Power Consumption (Max.)	320 w/hr	Total Weight with Water	78kg

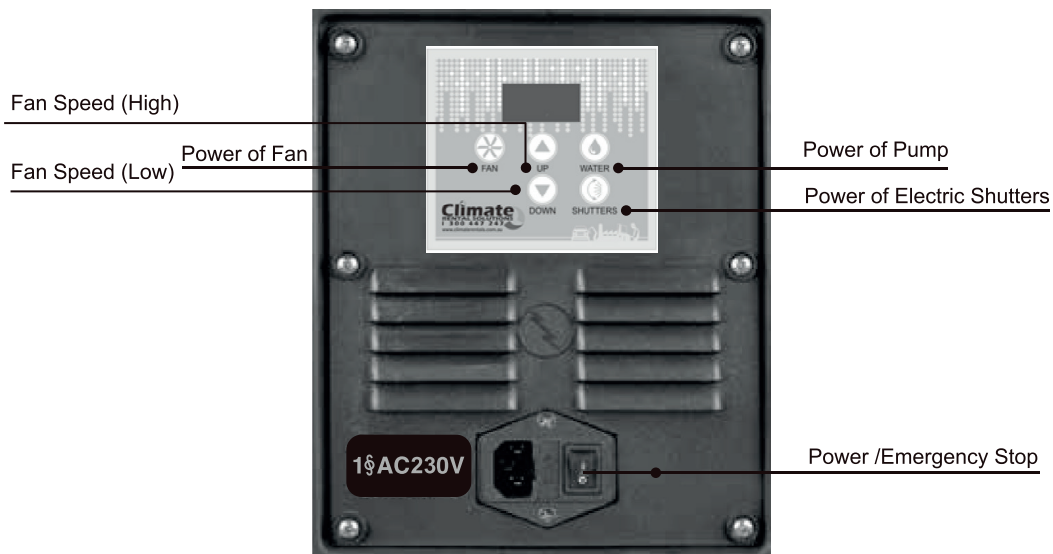
(The sound volume data is detected from 3 m near, and will be verified in different surrounding area.)



INSTRUCTION



1. Operation Process : Open the water inlet to fill up the tank. Turn on the power of pump (see Control Panel Instruction below), and let the water wet the cooling pad for 1 to 2 minutes , then turn on the power of fan and adjust the fan speed. By following the process, you will get the best cooling effect of your fan.
2. Please avoid spraying water on the control panel ; it may cause short-circuit.
3. Control Panel Instruction:



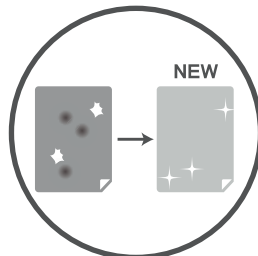
A		Power / Emergency Stop	<ul style="list-style-type: none"> • Switch the button and light up the power indicator. • Press the button to turn off the power when any emergency occur. Please follow the on and off process below for general usage. • Attention: Once you press the Emergency Stop, restart the fan after 20 seconds.
B		Power of Pump	<ul style="list-style-type: none"> • Switch on the button, the pump will start as there is sufficient water inside the tank. The pump would not start when the water level is low. Please fill up the tank before use.
C		Power of Fan	<ul style="list-style-type: none"> • Switch on the power of fan and press the fan speed regulator to control the speed.
D		Fan Speed Regulator	<ul style="list-style-type: none"> • Control the fan speed as the power of fan is on. From 0-100; the higher the number, the faster and more output from the fan.
E		Power of Electric Shutters	<ul style="list-style-type: none"> • Control the electric shutters.

CLEAN AND MAINTAIN



CHANGE THE WATER REGULARLY

- During use, the dust and particles would precipitate inside the tank. This may reduce the cooling capacity of the fan and brings bad odor. We suggest to change the water in the tank at least once a week; increase frequency if needed. Do not spray water directly to the inverter or the control panel.
- The cooling fan can filter dust and particles. When using the fan in an area with dusty air, we suggest to open the manual drain to drain the water after use. Fill the tank next time when needed.
- Manual Drain : At the bottom of the cooling fan. Open the cap and drain the water out. Put the cap back afterward.



The water cooling pads are consumables. Please contact us or our distributor for replacement when stained or torn.



WARNING:

- Please follow the instructions in this manual accurately. Damages and injuries caused by improper use will not be covered under the warranty.
- We are not responsible for accident caused by unauthorized product modifications.

- When notice any problems which may occur during the delivery or transportation , please contact us or our distributor in your country for urgent assistance.
- To avoid any accident or damage, please follow the rules below:
 - You must learn how to operate the machine correctly before use.
 - You must read through the manual and have the knowledge of all the instructions before use.
 - You must read through the manual and understand every instruction label before use.

The content of this manual, including the specifications and the design of the products may subject to be modified without prior notice. This manual is protected by copy laws. All rights are reserved by Climate Rental Solutions.

INSTRUCTION

OPERATING INSTRUCTION

1. Please follow the conditions below:



Please connect the fan with AC 110V or 220V , Single Phase power source. (There is a voltage instruction sticker on the fan.)

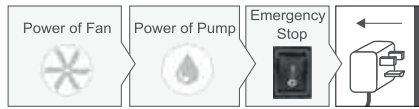


The power voltage should not be 10% higher or lower than the indicated voltage.

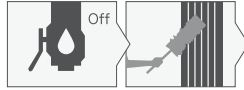


Suitable Operating Temperature: 0°C-45°C. Do not place the machine near heat or fire.

2. When water storage level comes low, the pump would automatically stop. Please fill the tank to the maximum of the scale and do not over fill.
3. Do not stand, sit, or place things on the fan. It may cause damage, overturning, or injury when things drop.
4. Keep the buckle of the ice cube inlet fastened after use.
5. Do not detach the cover guard and other parts of the fan, or it may cause fan damage or accident.
6. Please provide an independent socket or cable for the fan. Do not share the power source with other high power consumption equipment to ensure safety.
7. By turning off the pump switch, you can use this product with the fan function only.
8. To ensure the best cooling effect, we suggest to wash the cooling pad and change the tank water once every week. Open the manual drain cap at the bottom anti then fill up the tank again after the following cleaning procedures can last the pump's service life longer.



- A. Attention! Before the cleaning process, please switch off the fan, plug off, and move the fan away from power source and other equipment.



- B. Open the manual drain cap below, the cooling pad with soft brush and wash from the top. After washing, wait until the waste water drain away, then close the drain cap.



- C. When washing the cooling pad, do not spray water directly to the control panel or the cover of the inverter. This will damage the motor controller.



- D. Wipe the fan housing with wet towel, do not spray water or wipe it with volatile liquid.

9. Product damages cause by the following issues are not covered under our warranty.

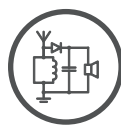
- Power connection with incorrect voltage.
- Damage during handling or transit caused by users.
- Damage caused by natural calamities.
- Structural damage caused by volatile liquid or gas.
- Accident or damage caused by wire connection or power sharing with other equipment.
- Damage caused by converting or changing of the parts.
- Malfunction caused by wire altering.
- Damage caused by water spray or rain.
- Pump damage caused by clogging due to careless of cleaning.
- Damage caused by uninstructed and incorrect procedures.



Please contact us for any questions.



Stepless Fan Speed Control



Short-Circuit Protection



Soft Start Motor



Low Water Level Protection



Over-Current Protection